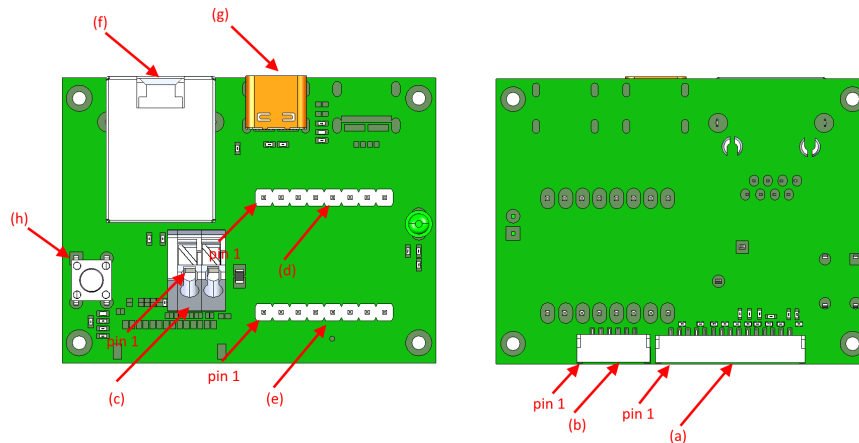


# nano/mini-OEM and Helix Mesh Rider Radio – Eval Kit Connector Descriptions

## Connectors



S. No	Description
<b>a</b>	Primary connector to Helix Mesh Rider Radio
<b>b</b>	Power connector to Helix Mesh Rider Radio
<b>c</b>	Power connector, snap-in
<b>d</b>	Pin header, 2.54 mm (NOT POPULATED)
<b>e</b>	Pin header, 2.54 mm
<b>f</b>	RJ45 connector, ETH1
<b>g</b>	USB-C Device data port
<b>h</b>	Factory reset switch

## Pin Headers

### Power Connector (c)

Pin Number	Voltage	Pin Description
<b>PIN 1</b>	GND	GND
<b>PIN 2</b>	+5.0V	Power In

### Pin header (d) (NOT POPULATED)

Pin Number	Direction	Voltage	Pin Description
<b>PIN 1</b>		GND	GND
<b>PIN 2</b>	I/O	Diff Signal	USB-Device-D- (Ethernet over USB only)
<b>PIN 3</b>	I/O	Diff Signal	USB-Device-D+ (Ethernet over USB only)
<b>PIN 4</b>		GND	GND
<b>PIN 5</b>			NOT USED
<b>PIN 6</b>		GND	GND
<b>PIN 7</b>			NOT USED
<b>PIN 8</b>			NOT USED

### Pin header (e)

Pin Number	Direction	Voltage	Pin Description
<b>PIN 1</b>			NOT USED
<b>PIN 2</b>			NOT USED

Pin Number	Direction	Voltage	Pin Description
<b>PIN 3</b>			NOT USED
<b>PIN 4</b>			NOT USED
<b>PIN 5</b>		GND	GND
<b>PIN 6</b>	I/O	0V to +2.8V	GPIO2
<b>PIN 7</b>	I	0V to +3.3V	UART_RX
<b>PIN 8</b>	O	0V to +3.3V	UART_TX